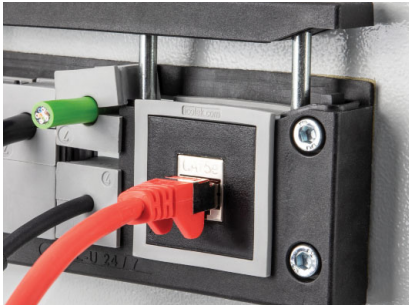
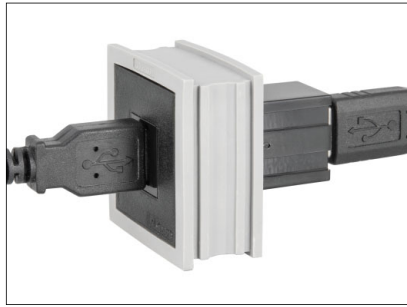


AT-KS

Adapter Grommet for Keystone Couplers



KEL-U 24|7 assembled with 1x AT-KS, equipped with a Keystone coupler.



USB-, RJ45 or e.g. HDMI connectors can be plugged in from the front and from the back.



1.13

Type	Order No.	Height x Width x Length [mm]	Material	PU
AT-KS	39952	42 x 41.5 x 19 / 1.65 x 1.63 x 0.75"	PA / Elastomer	10

Various Application Examples

USB, RJ45, HDMI and approx. 70 other Keystone couplers.



Product Description

The grommet AT-KS is constructed on the basis of a KT cable grommet. In this elastomer grommet, a polyamide body is integrated. All couplers based on the Keystone system can be simply snapped in.

By using the grommet AT-KS, the split cable entry frame can be used to route pre-terminated cables and at the same time it can also be used as an interface for connectors. This can save additional cut-outs and reduce labour costs.

Advantages & Benefits

- By utilising the AT-KS grommet, connectors can be integrated directly into the cable entry frame
- Separate cut-outs for connectors are no longer necessary
- Space-saving solution
- Grommet is suitable for all Keystone couplers
- Snap-in assembly

Specifications

Material	Grommet: Elastomer Body: Polyamide
Flame class	UL94-Vo, self-extinguishing
Temperature	-40°C to +90°C (static)
Properties	Halogen free, silicone free

